

Upcoming Events:

Brown University Symposium for Undergraduates in the Mathematical Sciences (SUMS)

Brown University
April 5, 2014

USTARS 2014

UC Berkeley
April 11-13, 2014

The Mathematical Sciences in Obesity Research

University of Alabama at Birmingham
May 12-16, 2014

SAMSI Undergraduate Modeling Workshop

North Carolina State University
May 18-23, 2014

2014 NSF-CBMS Conference

University of Texas at Arlington
May 27-31, 2014

Conference on Partial Differential Equations

Novacella, Italy
May 28-June 1, 2014

Recruiting and Retaining Graduate Students in the Statistical Sciences and Applied Mathematics

Research Triangle Park, NC
June 5-6, 2014

Poisson 2014

The University of Illinois at Urbana-Champaign
August 4-8, 2014

ICERM IdeaLab 2014

Brown University
August 11-15, 2014

Field of Dreams Conference

Phoenix, AZ
November 7-9, 2014

Iowa State University Department of Mathematics: A leader in URM graduate students

Since their involvement with the Alliance, the **Iowa State University Department of Mathematics** has been a strong ally for, & has displayed tremendous success in, mentoring under-represented minorities (URM) in their PhD program.



Dr. Leslie Hogben

Dio Lewis Holl Chair in Applied Mathematics & Professor of Mathematics Dr. Leslie Hogben talked about ISU's involvement with the Alliance & their current group of URM graduate students. "Prior to 2008 I don't think ISU math ever had more than one underrepresented minority student enrolled in our graduate programs at any one time." Today the ISU Department of Math has 16 under-represented minority graduate students (11 PhD, 5 MS) enrolled, 10 of whom are Alliance Scholars.

The Alliance saw much of its growth in the late 2000's "dramatically expanding the pool of students eligible to participate," Hogben explained. From 2007-2008 the number of Alliance Scholars doubled, with an even larger spike in numbers at the end of 2009. "A lot of things came together in 2008-2009 that created a substantial change & led to the current success of our math department," Hogben stated. Hogben became the Midwest Regional Director for the Alliance & in summer 2008 became the ISU Math Department Diversity Director.

Number of URM's to enter into ISU graduate program:

2009- 2
2010- 4
2011- 1
2012- 4
2013- 5

In November 2008 ISU hosted the 2nd Annual Field of Dreams Conference with over 40 Alliance Scholars in attendance. **ISU's Mathematics and Computing Research Experience for Undergraduates (REU)** also saw an increase in enrollment for their 2009 program with 21 participants, up from 13 participants in 2006. Many Alliance Scholars were exposed to ISU's Math Department through these programs, introducing them to the wonderful community of minority scholars the math department at ISU was beginning to build. ISU takes great care of their students, many of which go on to receive distinguished recognition. Alliance Scholar Saulo Orizaga is completing his PhD this summer & has been awarded a prestigious Alliance for Building Faculty Diversity Postdoctoral Fellowship.



2009 ISU REU Participants

With the combination of a strong summer program, hosting the Field of Dreams Conference, & receiving significant support from the department, including then Department Chair Wolfgang Kliemann & current Chair Clifford Bergman, it is no wonder Iowa State is a front runner in under-represented minority graduate students. "In many ways the Department of Mathematics at ISU is a model for our Graduate Program Groups. Their program has broad faculty participation, they do a great job of mentoring their students, & they have the support & encouragement of the leadership of their department. It is no surprise that they have been so successful. The Department of Mathematics at ISU is one of the founding members of the Alliance & we are deeply appreciative of the role they have played throughout the years," Phil Kutzko, Alliance Director.



National Alliance for
Doctoral Studies in the
Mathematical Sciences

University of Iowa
College of Public Health-Biostatistics
145 N. Riverside Drive
Iowa City, Iowa 52245

Tel: 319-384-1592
Fax: 319-384-1591
<http://www.mathalliance.org/>

For additional information contact Billie
Townsend at billie-townsend@uiowa.edu

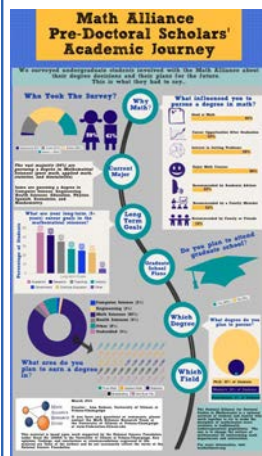
Find Us Online!

 Like us on Facebook:
National Alliance for Doctoral Studies
in the Mathematical Sciences

 View our photos at
<http://www.flickr.com/mathalliance>

 Follow us on Twitter @Math_Alliance

Math Alliance Pre-Doctoral Scholars' Academic Journey



This month the Math Alliance Research Study is sharing some of their findings about Alliance Scholars' academic journey with a fantastic infographic!

A full page version of the infographic can be found on page 4 of the newsletter. Make sure to visit the [Math Alliance Research Study website](#) to learn more about the research they are doing on the Alliance Community.



ENHANCING DIVERSITY IN PHYSICS GRADUATE EDUCATION



The APS Bridge Program is now accepting applications. The program provides 1-2 years of research experience, coursework, mentoring, and application coaching to students interested in pursuing a PhD in physics. African American, Hispanic, and Native American students are strongly encouraged to apply. Students must be U.S. Citizens or Permanent Residents, and have received a bachelor's degree in physics (or a related discipline) by summer 2014 to be eligible. Take a look at the website for more information on [student eligibility](#) and [APS Bridge Sites](#). **Application deadline is March 21, 2014.** The application can be completed [online here](#).

The Mathematical Sciences in Obesity Research University of Alabama at Birmingham May 12-16, 2014



The mathematical sciences including engineering, statistics, computer science, physics, econometrics, psychometrics, epidemiology, and mathematics qua mathematics are increasingly being applied to advance our understanding of the causes, consequences, and alleviation of obesity. These applications do not merely involve routine well-established approaches easily implemented in widely available commercial software. Rather, they increasingly involve computationally demanding tasks, use and in some cases development of novel analytic methods and software, new derivations, computer simulations, and unprecedented interdigitation of two or more existing techniques. Such advances at the interface of the mathematical sciences and obesity research require bilateral training and exposure for investigators in both disciplines. This five day course on the mathematical sciences in obesity research features some of the world's finest scientists working in this domain to fill this unmet need by providing nine topic driven modules designed to bridge the disciplines.

For full details of the course, please visit the website at <http://www.soph.uab.edu/energetics/shortcourse/first>. You may also apply online at <http://www.soph.uab.edu/energetics/shortcourse/first/application>. Limited travel scholarships are available to young investigators.

Alliance Scholar Academic Update Form



Last month all Alliance Scholars were sent a link to an Alliance Scholar Update Form. As you can imagine with over 1,000 Alliance Scholars it is hard to keep up with what everyone is up to. If you could take five minutes to answer a few questions on the **Alliance Update Form** we would greatly appreciate it!

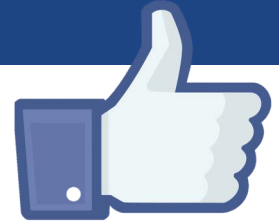
Alliance Mentor Profile Webpage Updates

Mentors if you haven't already sent your information to Billie Townsend for you Alliance Mentor Profile please email your updates to Billie at billie-townsend@uiowa.edu.



100 Likes on Facebook!

We recently reached our first 100 likes on Facebook! See what all the talk is about, [click here](#) to visit our Facebook page. Make sure to 'like' us to receive the most up to date information about program, conference, and workshop opportunities as well as upcoming deadlines and resources.



Conference on Partial Differential Equations

Novacella, Italy
May 28 - June 1, 2014

The primary goal of this conference is to bring together scientists and mathematicians working in partial differential equations and related fields. Contemporary challenges raised by recent advances in engineering, industry, and bio-technology, will be confronted with state-of-the-art mathematical and computational tools in PDE. Advanced graduate students and young researchers are encouraged to participate.

The Conference on Partial Differential Equations will take place at the Monastery of Novacella, Southern Tyrol, Italy. The monastery complex is the largest in Tyrol and is extremely well preserved. [Click here](#) for more information about the conference and apply!

Recruiting & Retaining Graduate Students in the Statistical Sciences & Applied Mathematics



Research Triangle Park, NC
June 5-6, 2014

Application Deadline: March 28th

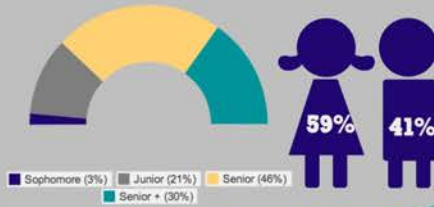
This workshop is aimed at faculty & administrators from PhD granting Departments in the Applied Mathematical & Statistical Sciences. The overall goal is to discuss current and successful strategies for enhancing success for U.S. students, and particularly members of underrepresented groups.

The workshop is designed for teams of three participants from each registered institution, including at least two faculty representatives from a mathematical sciences department and at least one departmental or campus-level administrator (Department Chair or Director of Graduate Studies, or Dean). These teams will work closely with faculty who have had significant previous experience with implementing changes in their own departments and will also have the opportunity to discuss their programs with other participating institutions. Specific topics will center on improving outcomes for graduate students in terms of recruitment, retention, graduation, career development, and placement, with a focus on broadening access and enhancing success for U.S. students, particularly women and members of underrepresented groups. [Click here](#) to learn more and register!

Math Alliance Pre-Doctoral Scholars' Academic Journey

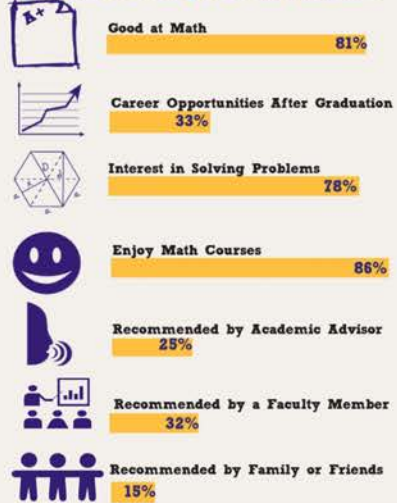
We surveyed undergraduate students involved with the Math Alliance about their degree decisions and their plans for the future. This is what they had to say...

Who Took The Survey?



Why Math?

What influenced you to pursue a degree in math?



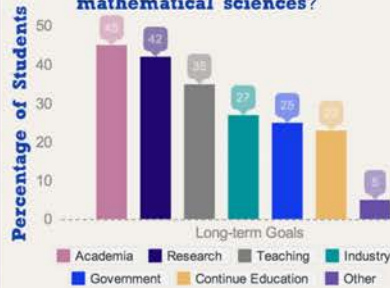
The vast majority (94%) are pursuing a degree in **Mathematical Sciences** (pure math, applied math, statistics, and biostatistics).

Some are pursuing a degree in **Computer Science, Engineering, Health Sciences, Education, Physics, Spanish, Economics, and Biochemistry.**

Current Major

Long Term Goals

What are your long-term (5+ years) career goals in the mathematical sciences?



Graduate School Plans

Do you plan to attend graduate school?

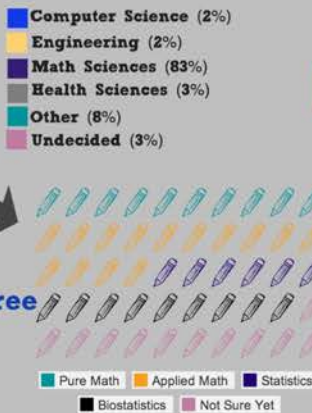


Which Degree

What degree do you plan to pursue?



What area do you plan to earn a degree in?



Which Field



March 2014

Creator: Lisa Dobson, University of Illinois at Urbana-Champaign

If you have any questions or comments, please contact the Math Alliance Research Team at the University of Illinois at Urbana-Champaign at stem@education.illinois.edu

This material is based upon work supported by the National Science Foundation under Grant No. 1242941 to the University of Illinois at Urbana-Champaign. Any opinions, findings, and conclusions or recommendations expressed in this material are those of the authors and do not necessarily reflect the views of the National Science Foundation.

The National Alliance for Doctoral Studies in Mathematics is a national network of students and faculty who work together to try to make the discipline of mathematics more inclusive to traditionally underrepresented populations. The aim is to change the culture of mathematics by transforming math departments and universities.

For more information, visit mathalliance.org