

# THE MATH ALLIANCE

---



**DR. DAVID GOLDBERG**

***Director***

The month of January has flown by. Following up on last month's notes, I want to thank everyone who came to the Math Alliance events at the Joint Mathematics Meetings in Seattle. It was wonderful to see so many of you, and to connect if ever so briefly. The research talks by Math Alliance Scholars were of very high quality, and it is so impressive to see these young researchers making such significant contributions in the quantitative sciences. I look forward to next year's meeting, where we hope to have the 10th annual AMS special session devoted to Math Alliance Scholar researchers. Our panel was also very well attended for a Saturday afternoon event, and we will be planning a similar event for 2026.

I am sure it is news to no one that the last couple of weeks, and the start of the new presidential administration, has brought a great deal of activity to the world of academic professionals and scientific researchers. Funding agencies like NIH and NSF are being asked to undergo significant structural revisions which could change the whole landscape of quantitative science research in this country. Many are concerned for what impact this might have on the preeminence of U.S. scientific research, and there is a lot of activity and discussion about what this might mean.

## *Save the Date:*

2025 Field of Dreams  
Conference  
November 7-9  
Atlanta, GA

---

I think it is just too early to tell, and we have to be vigilant, stay connected with our professional communities, and continue our professional work as best we can right now. We have been asked a lot about the expected impact on the Math Alliance, and the only answer I have is, again, it is just too early to tell. We are working on trying to get a better understanding, and we're discussing the situation with our partners to ensure we continue our work but meet all the mandated standards. For now, we have no changes to announce. So, I hope you will continue to engage with us. We are planning to hold the Career Paths Workshop May 29-30 in Chicago, and the Field of Dreams Conference November 7-9 in Atlanta. The Facilitated Graduate Admissions Procedure (F-GAP) will be opening up for nominations very soon and we hope we'll see more nominations than ever, and we will continue to mentor and match students. If we learn something which impacts any of our plans we'll let you know.

Finally, a brief shout-out to the Gulf States Math Alliance, and their upcoming conference, February 14-16 in New Orleans. This is their 8th annual meeting and I want to thank them for creating a model of a regional alliance that many others are trying to follow. I will not be able to attend this year's GSMA event, but I am sure we'll hear great things from folks who attend, and I hope many of you in the region will be able to go.

## What's Happening Next?

- **Gulf States Math Alliance Conference** New Orleans, LA  
February 14-16 2025
- **Math For All Conference** April 5, 2025
- **Infinite Possibilities Conference** IMSI (Univ. of Chicago)  
April 11-12, 2025
- **Career Paths Workshop** Univ. of Chicago May 29-30
- **2025 Field of Dreams Conference** (FOD 2025) Atlanta, GA  
November 7-9, 2025

## ICERM WORKSHOP

ICERM welcomes participant applications for a topical workshop, "Uncertainty Quantification for Mathematical Biology", held during May 5-9, 2025, on-site at ICERM in Providence, RI, USA.

Workshop details: [icerm.brown.edu/program/topical\\_workshop/tw-25-uqmb](https://icerm.brown.edu/program/topical_workshop/tw-25-uqmb)

The core goal of this workshop is to foster research and community collaborations at the intersection of computational and mathematical biology, UQ algorithms, and data-driven learning. This workshop aims to galvanize advancements across these fields. The week-long event will feature speakers, tutorials, panel and small-group discussions, and a poster session.

ICERM welcomes applications from faculty, postdocs, graduate students, industry scientists, and other researchers who wish to participate. To apply to attend, please submit an application through the website linked above. Some funding may be available for travel and lodging.

# 2025 Gulf States Math Alliance Conference

February 14-16, 2025

Southern University at New Orleans  
New Orleans, Louisiana

## Dr. Tasha R. Inniss

Vice Provost for Research  
Office of Research, Innovation, and  
Collaboration.  
Tenured Professor,  
Department of Mathematics.  
Principal Investigator, Center of Excellence  
for Black Women in STEM.  
Spelman College



Collin College  
Dallas County Community College District  
Jackson State University  
Lamar University  
Prairie View A&M University  
Sam Houston State University  
Southern University and A&M College  
Southern University at New Orleans  
St. Mary's University  
Stephen F. Austin State University  
Sul Ross State University  
Tarrant County Community College District  
Temple College  
Texas A&M International University  
Texas A&M University-Commerce  
Texas Southern University  
Texas State University  
Tougaloo College  
Tulane University  
University of Houston  
University of Louisiana at Lafayette  
University of Mary Hardin-Baylor  
University of Mississippi  
University of North Texas at Dallas  
University of Texas at Arlington  
University of Texas at El Paso  
University of Texas Rio Grande Valley  
Xavier University of Louisiana

## PROGRAM

Keynote lecture, panel discussions, graduate school fair, information session on Bridge Program, summer program, REU opportunities, and faculty professional development workshop

## TOPICS

Mentoring students in the mathematical sciences; Graduate school; Increasing participation from underrepresented and underserved groups; Fostering networking among faculty and students; Critical transitions from Community College to 4-year university to graduate school.

## REGISTRATION

<https://math.forms.uta.edu/view.php?id=65025>

## TRAVEL SUPPORT

Available to select teams consisting of students and a faculty mentor. Contact Dr. T. Martines, [theresa.martines@austin.utexas.edu](mailto:theresa.martines@austin.utexas.edu)

## ORGANIZING COMMITTEE

Joe Omojola (Chair, Southern University at New Orleans, LA)  
Jianzhong Su (co-chair, University of Texas at Arlington, TX)  
Phyllis Okwan (co-chair, Southern University and A&M, LA)  
Theresa Martines (co-chair, University of Texas at Austin, TX)  
Roderick Holmes (co-chair, Texas Southern University, TX)  
Rachid Belmasrour (co-chair, Southern University at New Orleans, LA)  
Michelle Lacey (Tulane University, LA)  
Cynthia Singleton (Southern University at New Orleans, LA)  
Yi Zhen (Southern University at New Orleans, LA)  
Brittney Falahola (Stephen F. Austin State University, TX)  
Joan Evans (Texas Southern University, TX)  
Katrina Cunningham (Southern University and A&M, LA)  
Caixia Chen (Jackson State University, MS)  
Meri Hughes (Mary Hardin-Baylor, TX)  
Brandt Kronholm (University of Texas Rio Grande Valley, TX)  
Albertha Lawson (Southern University and A&M, LA)  
Josef Sifuentes (University of Texas Rio Grande Valley, TX)

## CONTACT INFORMATION

Dr. J. Su & Dr. T. Aktosun, [aktosun@uta.edu](mailto:aktosun@uta.edu)  
UTA BRIDGE-TO-MATH-DOCTORATE PROGRAM <https://fermat.uta.edu/bridge/>  
GS Math Alliance web page: <http://www.math.tulane.edu/~gsmath>



Sponsored by:  
National Science Foundation (Due-2402471, 2444969 )  
Southern University at New Orleans  
Stephen F. Austin State University  
University of Texas at Arlington

KEYNOTE SPEAKER

Gulf States Math Alliance Institutions





## THE POLYTECHNIC APPROACH “LEARNING BY DOING”

Cal Poly Pomona is a place where careers begin, mentorship thrives, and future leaders learn to lead. Our hands-on approach to learning, diverse campus community, and culture of care help students succeed from day one.

### Degree Programs

The Department of Mathematics and Statistics confers two graduate degrees:

- MS in Mathematics (Pure Mathematics or Mathematics Education Emphasis)
- MS in Statistics and Applied Mathematics (Statistics or Applied Mathematics Option)

Our program is suitable for individuals interested in theoretical mathematics, applications of mathematics or statistics, working in industry, or teaching at the secondary or post-secondary level. Also, our program provides a solid foundation for those seeking to pursue further graduate study in various fields of mathematics.

### Full-time Faculty Applied Mathematics

Manuchehr Aminian  
Jillian Cannons  
Alan C. Krinik  
Randall Swift  
Jennifer Switkes  
Ryan Szypowski  
Hubertus von Bremen  
Weiqing Xie

### Pure Mathematics

J. Arlo Caine  
Briana Foster-Greenwood  
Berit Givens  
Emily Heath  
Peter Kagey  
Fernando Lopez-Garcia  
Ioana Mihaila  
John A. Rock  
Amber Rosin

### Mathematics Education

Stacy Brown  
Anne Cawley  
Stacy Musgrave  
Laurie Riggs  
Cristina Runnalls  
Greisy Winicki-Landman  
Hyunkyoung Yoon

### Statistics

He Jiang  
Hoon Kim  
Adam King  
Chris Jungwon Mun  
Jimmy Risk



## CAL POLY POMONA MATHEMATICS & STATISTICS

### GRADUATE PROGRAMS



CalPolyPomona  
College of Science



## Funding Your Education

Students are eligible for a wide array of scholarships & grants offered through the Department and the University. Financial aid and student loans are also available to fund the MA Program.

Many students also work as Teaching Associates (TAs). Applications are due in April in the Spring immediately preceding the Fall term in which you wish to begin the program. The TA application process is completely separate from that for admission to the graduate program itself.



## For More Information

### Graduate Coordinator

Dr. John Rock: [jarock@cpp.edu](mailto:jarock@cpp.edu)

### Information for International Applicants:

[cpp.edu/admissions/international/graduate](http://cpp.edu/admissions/international/graduate)

### Information for Undocumented Applicants:

[cpp.edu/broncodreamers](http://cpp.edu/broncodreamers)

### Division of Graduate Studies:

[cpp.edu/gradstudies](http://cpp.edu/gradstudies)

## Admissions

Applications are due **April 1**. An applicant not meeting the minimum standards of the department may be admitted as a conditional student, if space is available. Note that recommendation letters, the General GRE, and the Subject GRE in Mathematics are NOT required.

### MS in Mathematics

To be considered for admission, students must have completed single and multivariable calculus, introductory linear algebra, an introduction to proof-based mathematics (similar to our MAT 3100), introductory real analysis, and introductory modern/abstract algebra. Additional upper-division proof-based mathematics courses with grades of B or higher are strongly recommended.

### MS in Statistics and Applied Mathematics

To be considered for admission, students must have completed single and multivariable calculus plus lower-division coursework covering linear algebra, differential equations, and elementary statistics or data science. Upper-division applied mathematics and statistics coursework with grades of B or higher is strongly recommended. Experience with coding is also strongly recommended.

**APPLY NOW**

► [calstate.edu/apply](https://calstate.edu/apply)



## Degree Requirements

Regardless of the chosen degree program, graduate students must complete 30 credit units as described in the university catalog.

In all cases, students have the choice of either completing a thesis (26 units for coursework and 4 units for thesis preparation) or two comprehensive exams (28 units for coursework and 2 units for comprehensive exams preparation).

### MS in Mathematics

Core Coursework (14 units):

- Graduate Seminar
- Real Analysis I
- Abstract Algebra I
- Complex Analysis
- Problem Solving as a Mathematical Endeavor

Electives (12-14 units)

Culminating Experience (2-4 units)

### MS in Statistics and Applied Mathematics

Core Coursework (14 units):

- Applied Regression Analysis
- Mathematical Statistics I
- Numerical Analysis I
- Mathematical Modeling I

Subplan/Option Coursework (6-9 units)

Subplan/Option Electives (3-8 units)

Culminating Experience (2-4 units)

### Mathematics & Statistics

Cal Poly Pomona  
3801 West Temple Avenue  
Pomona, CA 91768

Phone: 909-869-3142

Website: [cpp.edu/sci/mathematics-statistics](http://cpp.edu/sci/mathematics-statistics)



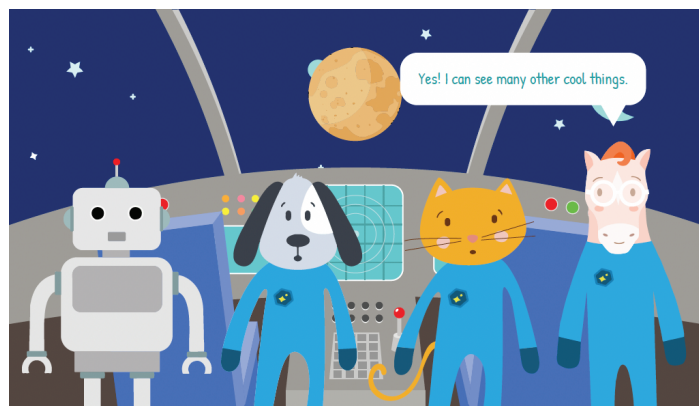
# REU in Computing for Health and Well-being

May 26 - August 2, 2025

IOWA



The Computer Science Department at the University of Iowa will conduct a 10-week summer research program funded by the National Science Foundation (NSF). Our site is motivated by the considerable strain on the U.S. healthcare system due to short-term challenges, such as those posed by the COVID-19 outbreak, and long-term trends, such as an aging U.S. population. Computer scientists are in a unique position to help solve these and other problems in health and well-being. Ten participants will join their faculty mentor's research group to work on interdisciplinary projects.



## Program Highlights

- \$6,000 stipend
- On-campus housing and food
- Mentored research experience
- Research Bootcamp
- Career development workshops
- Fun social events and more

## Apply

Applications will be reviewed on a rolling basis. Submit by March 15 for full consideration. To apply or learn more visit:

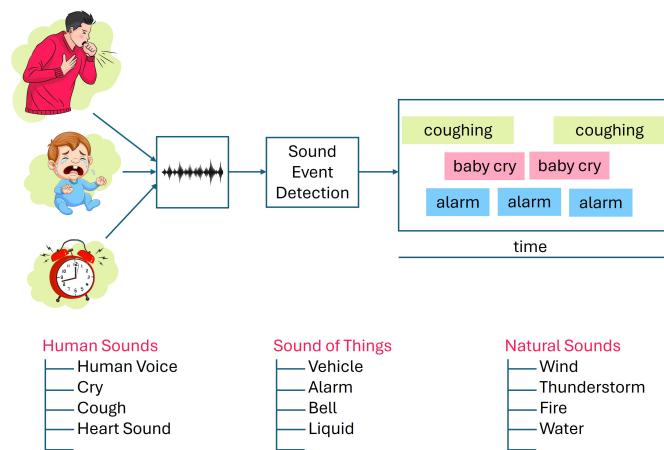
[bit.ly/uiowacs\\_reu](https://bit.ly/uiowacs_reu)

## Contact Information

Dr. Elizabeth Kleiman  
[uicsreu@gmail.com](mailto:uicsreu@gmail.com)

## Qualifications

- US citizen or permanent resident
- Major in Computer Science or related field
- Available to attend entire 10 weeks
- Full time student in good academic standing
- Returning for at least one semester of undergraduate study before graduation
- Students from populations underrepresented in STEM fields or from academic institutions with limited research opportunities are encouraged to apply
- Students with disabilities are encouraged to apply





# RUSIS@IU – Summer 2025

## Javier Rojo – Director



### 10– Week Summer Program

May 27th - August 1st 2025

The program is designed to prepare undergraduate students for graduate research careers in the Bio/ Statistical Sciences. Students will have the opportunity to learn about statistical and computational sciences and will engage in a research project in one of the following areas: Extreme Value Theory, Multiple Comparisons, Multivariate Survival Analysis, Modelling of the power grid, and other biomedical and Statistical Problems.

Students will receive a \$6,000 stipend for the 10 weeks and up to a \$650 to cover travel expenses. Lodging and meals will be provided for.

### Eligibility

- \* Students majoring in mathematics, computer science, statistics, or related field who have had the calculus sequence and a course in linear or matrix algebra

Must not hold any undergraduate degree by the end of summer 2025.

Must be a US citizen or permanent resident

**Applications deadline is**

**April 21st, 2025**

**Application can be requested from**

[jrojo@iu.edu](mailto:jrojo@iu.edu)



Grant support through the National Science Foundation and the National Security Agency



# IMSSRS 2025

## INTERNATIONAL MATHEMATICS AND STATISTICS STUDENT RESEARCH SYMPOSIUM

A VIRTUAL CONFERENCE FOR ALL STUDENTS

FEATURING SYNCHRONOUS ONLINE  
PRESENTATIONS BY HIGH-SCHOOL,  
UNDERGRADUATE AND GRADUATE  
STUDENTS FROM ALL OVER THE WORLD

### PLENARY SPEAKER

**SUSAN GOLDSTINE**

ST. MARY'S COLLEGE OF MARYLAND

SUPPORTED BY  
THE AFRICAN MATHEMATICAL UNION,  
VCU DEPARTMENT OF MATHEMATICS  
AND APPLIED MATHEMATICS, AND  
GVSU DEPARTMENT OF MATHEMATICS



**SATURDAY**

**APRIL 12, 2025**



**TIME**

**4:45AM-4:40PM EDT**



**REGISTRATION AND  
FURTHER INFO AT**

<https://sites.google.com/view/imssrs>



# infinite possibilities

CONFERENCE 2025

## ABOUT IPC

The Infinite Possibilities Conference (IPC) is a national conference designed to broaden participation in the mathematical sciences. IPC aims to foster a sense of community in mathematics among women from underserved populations and welcomes all mathematicians who feel they may contribute to or benefit from this event.

## INVITED SPEAKERS

**Ranthy A. Clark**, Duke University

**Rochelle Gutierrez**, University of Illinois Urbana-Champaign

**Noelle Sawyer**, Southwestern University

**Erica Walker**, University of Toronto

## CONFERENCE SESSIONS

- Workshops for students and professionals
- Research talks & student poster sessions
- Panel discussions & networking opportunities
- Banquet and presentation of the Dr. Etta Z. Falconer Award for Mentoring and Commitment to Diversity

Save the date  
**APRIL 11-12  
2025**  
Celebrating 20 years of fostering connection & belonging in the mathematical & statistical sciences

## EVENT DETAILS

Friday April 11 - Saturday April 12

Conference will take place at IMSI on the campus of University of Chicago

*Special pre-conference sessions will be offered on Thursday April 10, 2025*



**TO REGISTER AND FOR  
MORE INFORMATION  
SCAN THE QR CODE**



# SUMMER INTERNSHIP

## 2025 OPPORTUNITY AT THE UNC CENTER FOR AIDS RESEARCH

**Do you want to use math or computer science to help the fight against HIV/AIDS?**

The Biostatistics Core at UNC Center for AIDS Research is seeking a part-time **paid summer undergraduate internship** (15-30 hours/week). The Core helps design studies, analyze data and advance statistics methods for HIV research, at UNC and internationally. As a summer intern, you will have the opportunity to aid in statistical analysis and gain valuable experience in multidisciplinary research. Students majoring in math, statistics, computer science, data science, or another quantitative research field are invited to apply during or after their second year of undergraduate studies. Students who will graduate this Spring are also eligible to apply. If you already have R or SAS coding experience, please let us know. To learn more about our research, go to <https://www.med.unc.edu/cfar/core-areas/biostatistics/>.

**\*Application deadline: Friday, February 14, 2025\***

### ELIGIBLE CANDIDATES:

—  
-ARE CURRENTLY ENROLLED UNDERGRADUATE STUDENTS CONSIDERING A CAREER IN BIOSTATISTICS OR BIOMEDICAL RESEARCH

—  
-HAVE A KEEN INTEREST IN MATHEMATICS, STATISTICS, AND/OR PROGRAMMING

—  
-ARE COMPUTER SAVVY, ABSTRACT THINKERS WITH MATH TRAINING AT LEAST THROUGH CALCULUS 1

—  
-WANT TO LEARN MORE ABOUT HIV/AIDS



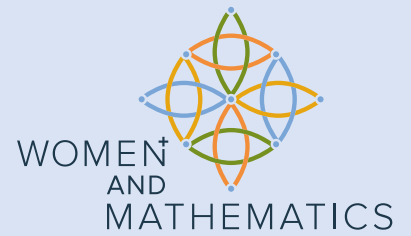
To apply, send your resume/CV, availability, and a cover letter to: [cfar\\_intern@unc.edu](mailto:cfar_intern@unc.edu). Please have 2 reference contacts (teacher/mentor/professional) available upon request.





# Convexity and Combinatorics in Algebraic Geometry

MAY 18-23, 2025



## UHLENBECK LECTURE COURSE

**Tropical Geometry**

**Melody Chan** | Brown University

Tropical geometry is a modern degeneration technique in algebraic geometry. Think of it as a very drastic degeneration in which one associates a limiting object to a family of algebraic varieties that is entirely combinatorial. I will introduce tropical geometry through the beautiful topics of tropical curves, tropical abelian varieties, and their moduli spaces.

**Prerequisites:** Exposure to combinatorics and graph theory, and a semester of algebraic geometry or algebraic topology.

## TERNG LECTURE COURSE

**Log-concavity and Matroids**

**Cynthia Vinzant** | University of Washington

Matroids are combinatorial structures that model independence, such as that of edges in a graph and vectors in a linear space. I will introduce the theory of matroids along with their surprising connection to a class of multivariate polynomials that are log-concave on the positive orthant. Log-concavity is an important feature of many functions and discrete sequences appearing across mathematics, including combinatorics, algebraic geometry, convex analysis, and optimization. We will explore the real and combinatorial geometry underlying log-concavity along with applications to matroids and the mixing times of random walks.

**Prerequisites:** Linear algebra and some exposure to each of algebra, combinatorics, graph theory, and probability.

## ORGANIZERS

**Wei Ho** | IAS/University of Michigan/Princeton University, Director

**Michelle Huguenin** | Institute for Advanced Study, Program Manager

**Dusa McDuff** | Barnard College and Columbia University, Professor

## APPLICATION DEADLINE IS FEBRUARY 14, 2025

For more information, please visit:

[www.ias.edu/math/wam/program-years/2025-program-women-and-mathematics](http://www.ias.edu/math/wam/program-years/2025-program-women-and-mathematics)

*W<sup>+</sup>AM is most grateful for renewed funding from the National Science Foundation, Lisa Simonyi, the Robert S. Hillas Fund, the Minerva Research Foundation and Princeton University Department of Mathematics. Their generous support enables W<sup>+</sup>AM to continue its mission to recruit and retain more women in mathematics through new and sustained initiatives. W<sup>+</sup>AM is open to all that support its mission regardless of gender.*

IAS

SCHOOL OF  
MATHEMATICS  
INSTITUTE FOR ADVANCED STUDY







PLEASE POST 2025 PROGRAM FOR WOMEN+ AND MATHEMATICS

IAS  
INSTITUTE FOR  
ADVANCED STUDY

Program for Women+ and Mathematics  
1 Einstein Drive  
Princeton, NJ 08540  
wam@ias.edu



WOMEN+  
AND  
MATHEMATICS



IAS  
INSTITUTE FOR  
ADVANCED STUDY



Save the date!

MATH

MATH FOR ALL CONFERENCE

April 5 2025

Virtual and In-person at

New Orleans, LA

Austin, TX

Boulder, CO

Clemson, SC

Salt Lake City, UT

Virtual

More info here!





## CUBE 2025 SUMMER PROGRAM

The Collaborative Undergraduate Biostatistics Experience (CUBE) program provides undergraduate students who are underrepresented in STEM programs with training and mentorship in a real-world collaborative health data science research project.



Program Dates:

June 2, 2025 through July 25, 2025

### WHAT IS CUBE?

CUBE is an 8-week training program designed to provide undergraduate students who are underrepresented in STEM programs the opportunity to engage in a collaborative data science experience in the health field, along with related professional development activities. The goal is to offer students an experience working with a real-world dataset under the mentorship of experienced data scientists and clinical experts, to help them determine if they want to pursue a career in collaborative data science, and to provide them with professional development skills for the workplace or for graduate school.

### WHO WILL HOST AND MENTOR STUDENTS?

Students will be hosted and mentored by faculty and staff at either Virginia Tech's (VT's) Health and Technology campus in Roanoke, Virginia or at the University of Virginia (UVA) located in Charlottesville, Virginia.

### STIPEND?

\$4800 (housing and social outings will be covered by the program; student is responsible for food/meals; this stipend is taxable to the student)

### MORE INFO

Scan this QR code to get more information about the CUBE summer program



FOLLOW US ON X (TWITTER)  
[@VT\\_BIOSTATS](https://twitter.com/VT_BIOSTATS)

### APPLICATIONS

Applications Open:

October 1, 2024 to February 28, 2025

Where can students apply?

<https://biostat.centers.vt.edu/CUBE.html>

### WHO SUPPORTS THE CUBE PROGRAM?

CUBE is funded by the National Institutes of Health's (NIH) NIDA/NIAAA institutes under award number R25DA058482, AbbVie, as well as by Virginia Tech's College of Science, the University of Virginia's Division of Biostatistics, and the Integrated Health Research Institute of Virginia (iTHRIV).



### OUR TEAM

The mission of the Center for Biostatistics and Health Data Science (CBHDS) is to achieve excellence in Virginia Tech's health- and medically-related research portfolio.



**Drive change and shape  
the future using your analytical  
and reasoning skills!**

**Apply for the AMS  
Congressional  
Fellowship today.**

## AMS Congressional Fellowship 2025–2026

The American Mathematical Society will sponsor a Congressional Fellow from September 2025 through August 2026. The Fellow will spend the year working on the staff of either a member of Congress or a congressional committee, contributing scientific and technical expertise to legislative and policy areas. They will bring their technical background and external perspective to the decision-making process in Congress. Prospective Fellows must be aware of and sensitive to political and social issues and have a strong interest in applying their knowledge to solve societal problems.

Now in its 20th year, the AMS Congressional Fellowship provides a unique public policy learning experience, and demonstrates the value of science-government interaction. The program includes an orientation on congressional and executive branch operations, and a year-long seminar series on issues involving science, technology, and public policy.

By the **February 1, 2025** deadline date, applicants must:

- hold a PhD or an equivalent doctoral-level degree in the mathematical sciences.
- be a US citizen.
- provide a statement of interest and qualifications.
- submit a current curriculum vitae and three letters of recommendation.

Applicants must not be a federal employee.

**The Fellowship stipend is US\$105,812 for the Fellowship period, with additional allowances for relocation and professional travel, as well as a contribution toward health insurance.**

*"The fellowship definitely  
will strengthen my communication  
skills, and will allow me to apply  
general logic and analysis skills in a  
different setting than what I've  
been used to."*

—Ellen Urheim,  
AMS Congressional  
Fellow 2023–2024



Learn more at the JMM2025  
session on **DC-based Policy  
and Communications  
Opportunities**, Friday,  
January 10, 2025 at 4:30 p.m.

**Scan below**



Or visit [www.ams.org/ams-congressional-fellowship](http://www.ams.org/ams-congressional-fellowship)  
to learn more and apply.

# **Paid Summer Research, Graduate Fellowships, and Graduate programs!**

## **For Undergraduates**

*Paid Summer 2025 Undergraduate  
Research Placements:  
Over 700+ programs – NSF REU, NASA,  
NIH and other paid summer research  
opportunities for undergrads*



## **For Financial Support in Graduate School**

*Fellowships and graduate programs  
in a wide variety of STEM disciplines*



## **For tips on Applying and Associated Resources**



**[www.pathwaystoscience.org](http://www.pathwaystoscience.org)**

Education and career training opportunities in Science, Technology, Engineering & Mathematics (STEM)

*SEARCH for a program . . . find your future!*



## Data Science Professional Resource Group

### Diversity and Outreach Mentorship Program

[APPLY HERE](#)

#### Purpose



Racial bias is a known phenomenon in the Data Science industry, due to unconscious bias, lack of awareness and educational under-representation. This program was created to combat this bias within the industry.

#### Goal



Provide opportunities to under-served individuals to pursue a career in Data Science and diversify Liberty's Data Science community.

#### Duration



The program will be 6 months long and mentees and mentors should have a commitment to meet at least once a month.

#### Structure



DSPRG hosts bimonthly group mentee sessions that may serve as a check in. Mentors and mentees can decide on other meetings depending on the mentee's goals.

#### What To Expect



Potential topics that mentors and mentees may cover include interview skills, job shadow opportunities, and goal setting to prepare for full-time and internship opportunities.

#### Added Value



Attracting unique talent, diversifying DSPRG, avoiding bias, retaining talent, providing opportunities for development, and building partnerships.

## MSRI / Simons Laufer Mathematical Sciences Institute (SLMath) Programs

### Register for Spring 2025 Scientific Workshops at SLMath

SLMath workshops are free to attend in Berkeley and online, thanks to the generous support of our funders, including the U.S. National Science Foundation. Register Online:

[slmath.org/workshops](https://slmath.org/workshops).

#### Probability and Statistics of Discrete Structures

- [Connections Workshop](https://slmath.org/workshops/1085) (slmath.org/workshops/1085): January 23-24, 2025
- [Introductory Workshop](https://slmath.org/workshops/1086) (slmath.org/workshops/1086): January 27-31, 2025
- [Detection, Estimation, and Reconstruction in Networks](https://slmath.org/workshops/1098) (slmath.org/workshops/1098): April 21-25, 2025

#### Extremal Combinatorics

- [Connections Workshop - Extremal Combinatorics](https://slmath.org/workshops/1087) (slmath.org/workshops/1087): February 6-7, 2025
- [Introductory Workshop - Graph Theory: Extremal, Probabilistic and Structural](https://slmath.org/workshops/1088) (slmath.org/workshops/1088): February 10-14, 2025
- [Algebraic and Analytic Methods in Combinatorics](https://slmath.org/workshops/1091) (slmath.org/workshops/1091): March 17-21, 2025

#### Other Workshops

- [Hot Topics: Interactions between Harmonic Analysis, Homogeneous Dynamics, and Number Theory](https://slmath.org/workshops/1089) (slmath.org/workshops/1089): March 3-7, 2025
- [Critical Issues in Mathematics Education \(CIME\) 2025](https://slmath.org/workshops/1139) (slmath.org/workshops/1139): April 2-4, 2025

**Funding Support:** Funding Support: Established researchers, postdoctoral fellows, and graduate students are invited to apply for funding. Funding awards are typically made eight weeks before the workshop; requests received after the funding deadlines are considered only if additional funds become available. Groups underrepresented in research-intensive contexts including women, gender-expansive individuals, minorities, and mathematicians not located at research centers are welcomed and encouraged to apply.

**Resources for Workshop Attendees:** SLMath is pleased to be able to offer a private room for nursing parents. Childcare grants are available for researchers with children under the age of 14 (limited to US Citizens and Permanent Residents, and foreign visitors with a visa status that allows for compensation, such as a J-1). See website for full details: [slmath.org/family-services](https://slmath.org/family-services).

*MSRI, now SLMath, has been supported from its origins by the U.S. National Science Foundation, joined by the National Security Agency, over 115 Academic Sponsor departments, private foundations, and generous and farsighted individuals.*



## MSRI / Simons Laufer Mathematical Sciences Institute (SLMath) -ADJOINT 2025

### Call for Applications: ADJOINT 2025

June 16 - July 27, 2025

SLMath invites applications for the **2025 ADJOINT yearlong program** that provides opportunities for U.S. mathematicians and statisticians – especially those from the African Diaspora – to conduct collaborative research on topics at the forefront of mathematical and statistical research. Participants will spend two weeks on site in Berkeley taking part by either:

- Joining **ADJOINT** small groups under the guidance of some of the nation's foremost mathematicians and statisticians to expand their research portfolio into a new area, or
- Applying to **Self-ADJOINT** as part of an existing or newly-formed independent research group to work on a new or established research project.

The 2025 on-site director is Dr. Naomi Cameron (Spelman College). For full details of ADJOINT projects and leaders, visit [slmath.org/adjoint](https://slmath.org/adjoint).

**Eligibility** All ADJOINT and Self-ADJOINT participants must be U.S. citizens or permanent residents, possess a PhD in the mathematical or statistical sciences, and be employed at a U.S. institution. Self-ADJOINT researchers may be part of only one group's application.

**How to Apply:** Applications will be hosted on MathPrograms.org beginning in Fall 2024. Application Deadline: **February 4, 2025**.

**Funding & Support:** Lodging, meals, travel expenses, and post-programmatic travel support. Childcare grants are available for researchers with children under the age of 17 (see website for restrictions) and a nursing room is available.

Member  
Institution

POSITION AT  
BAYLOR UNIVERSITY

**Baylor University**  
**Assistant Professor, Clinical track, Statistical Science**

The Department of Statistical Science at Baylor University invites applications for a Clinical Assistant Professor position starting in Fall 2025. The successful applicant will join a dynamic faculty in advancing our core mission to develop well-rounded statisticians through meaningful mentorships, diversified educational experiences, and scholarly research methods and opportunities.

This Clinical Assistant Professor will serve as the assistant director of the Department of Statistical Science Consulting Lab. Duties will include consulting with graduate students and faculty from other departments on campus, consulting with off-campus industry clients, mentoring PhD statistics students in consulting projects, and supporting the center's operations. The candidate will also be expected to teach two courses per semester, primarily applied statistical methods for non-statisticians. This appointment is a renewable full-time, benefits-eligible position with a 6-year promotion path to Clinical Associate Professor for successful candidates and a 12-year promotion path to Clinical Professor for highly successful candidates (See [Policy on Clinical Faculty at Baylor University \(BU-PP 719\)](#))

**Qualifications**

- Master's degree in statistics or a related discipline required.
- Doctoral degree in statistics or a related discipline preferred.
- Significant relevant work experience preferred.
- Candidates with industry or statistical consulting experience are particularly encouraged to apply.

The Department particularly welcomes applications from candidates with a demonstrated interest or research program in biostatistics, clinical trials, public health, or other areas of biostatistics. However, research is not a formal requirement.

**Application Instructions**

Please submit the following materials electronically via [Interfolio](#) (<http://apply.interfolio.com/148180>)

- A letter of application (cover letter);
- A statement of teaching interests;
- A current curriculum vitae;
- A copy of the official transcript from the highest-degree granting institution (if the doctorate is in progress, a copy of the official transcript of completed doctoral hours should be submitted);
- The contact information for three individuals who will provide letters of recommendation through Interfolio by the due date.

All applicants must complete the self-disclosed Religious Affiliation Form in Interfolio. All materials must be received by 11 PM CST on **02/15/2025**.

Questions concerning the position should be directed to Rod Sturdivant, Search Committee Chair, at [Rodney\\_Sturdivant@baylor.edu](mailto:Rodney_Sturdivant@baylor.edu).

Baylor University is a private not-for-profit university affiliated with the Baptist General Convention of Texas. As an Affirmative Action/Equal Opportunity employer, Baylor is committed to compliance with all applicable anti-discrimination laws, including those regarding age, race, color, sex, national origin, military service, genetic information, and disability. Baylor's commitment to equal opportunity and respect of others does not undermine the validity and effect of the constitutional and statutory protections for its religious liberty, including, without limitation, the religious organization exemption under Title VII of the Civil Rights Act of 1964, the religious exemption to Title IX of the Education Amendments of 1972, and the Free Exercise Clause of the First Amendment to the United States Constitution, among others. Baylor encourages women, minorities, veterans, and individuals with disabilities to apply.



Member  
Institution

**POSITION AT  
WASHINGTON STATE  
UNIVERSITY**

**The Program in Data Analytics and the Department of Mathematics and Statistics at Washington State University** invite applications for an Assistant Professor (Teaching), Career track faculty position in Pullman, WA, with a specialty in Data Analytics. This position is a fixed-term, nine-month, three-year appointment with the possibility of renewal. We seek applicants who have expertise in Data Science and Analytics with focus in fields related to data such as: data structures, machine learning, data mining, databases, data modeling, data ethics, corporate analytics or other data domain expertise. The successful candidate will be expected to teach undergraduate and potentially graduate courses for the Data Analytics program, create curriculum innovation, and work with us to continue to develop and expand the Data Analytics program at WSU. It is anticipated that the successful candidate will begin the appointment on August 16, 2025.

**Required Qualifications:** Earned Ph. D. in Data Science, Data Analytics, Statistics, Applied or Computational Mathematics, Computer Science or related fields grounded in Data Science or MS in one of the above fields, with industry experience in data science/analytics or teaching experience in one of the fields (mentioned above) of at least 3 years by appointment date. Demonstrated record of or potential for program and curricular development. Proven or potential for successful teaching and instruction. Demonstrated record of or potential for commitment to equitable and inclusive educational experiences as in alignment with WSU's land grant mission. Applicants must be authorized to work for any employer in the U.S. We are unable to sponsor or take over sponsorship of an employment Visa at this time.

**To Apply:** Visit [wsu.edu/jobs](https://wsu.edu/jobs), select your appropriate employment status, and search for R-12623. Applicants must upload the following required documents to their online application. External candidates, please upload all documents in the "Resume/CV" section of your application. Internal candidates, please upload all documents in the "Resume/Cover Letter" section of your application.

Applicants should include a cover letter addressing qualifications for this position as well as a response to the following prompt: As a land-grant university, our university has a continuing commitment to ensuring equitable and meaningful inclusion in our classrooms, collaborations, and academic work. The successful candidate for this faculty position will have the experiences, knowledge, and skills to build their pedagogy, curriculum, and service in ways that reflect and enhance this commitment. Using the job announcement for this position, please list at least three areas of responsibility you see as directly related to fulfilling this promise, and explain, in each, how your past education and teaching experiences, and resulting knowledge and skills, have prepared you to do this work. Please include your CV, teaching statement, names, addresses, and contact information of three references who can address your history of and potential for excellence in teaching and service.

Inquiries should be directed to Daryl DeFord [daryl.deford@wsu.edu](mailto:daryl.deford@wsu.edu) or Nairanjana Dasgupta [dasgupta@wsu.edu](mailto:dasgupta@wsu.edu).

**Posting Close Date:** Applicants must submit their completed application by **February 15, 2025**, at 12:00 a.m Pacific Time.

*Washington State University is an Equal Opportunity/Affirmative Action Educator and Employer. Members of ethnic minorities, women, special disabled veterans, veterans of the Vietnam-era, recently separated veterans, and other protected veteran, persons of disability and/or persons age 40 and over are encouraged to apply.*

Member  
Institution

## POSITION AT UNIVERSITY OF CALIFORNIA, IRVINE

**APPLICATION WINDOW- Open date:** October 29, 2024

**Next review date:** Sunday, Dec 1, 2024 at 11:59pm (Pacific Time) Apply by this date to ensure full consideration by the committee.

**Final date:** Friday, Feb 28, 2025 at 11:59pm (Pacific Time)

Applications will continue to be accepted until this date, but those received after the review date will only be considered if the position has not yet been filled.

**POSITION DESCRIPTION-** The Department of Statistics ([www.stat.uci.edu](http://www.stat.uci.edu)) in the Donald Bren School of Information and Computer Sciences (ICS) at the University of California, Irvine (UCI) invites applications for a tenure-track faculty position at the assistant professor level with an anticipated start date of July 1, 2025.

The Department of Statistics has a strong interdisciplinary flavor, focused on developing state-of-the-art methods for solving topical data-driven problems in natural and social sciences, medicine and engineering, and advancing the statistical theory that underlies those methods. We are searching for faculty with strong research potential, a commitment to excellence in teaching, dedication to inclusive excellence, and enthusiasm for helping our collegial department continue to grow. Applicants should hold a Ph.D. degree (or expected by Spring/Summer 2025) in statistics, biostatistics or a related field. Candidates with research interests in all areas of statistics will be considered.

The U.S. News and World Report 2024 Best Global Universities ranking identifies UCI as one of the top 30 universities for a graduate degree in statistics in the United States. The department is further ranked within the top 20 statistics graduate programs among all public institutions. Our Master of Data Science (MDS) was recently ranked No. 7 overall on Fortune's list of best Masters degree programs in data science and we are host to the first undergraduate degree in data science within the University of California system. The department currently consists of 16 primary faculty, 57 PhD students, 28 MS students, and 127 MDS students. Faculty distinctions in the department include 7 ASA fellows, 4 AAAS fellows, 3 IMS fellows, 3 Chancellor's professors, and 1 Distinguished professor.

The University of California, Irvine is ranked as a top 10 public university by U.S. News and World Report, has been identified by The New York Times as No. 1 among U.S. universities that do the most for low-income students, and is No. 2 in the west for diversity according to The Wall Street Journal/Times Higher Education. UCI has also done what no other school has done—rank among Sierra's Top 10 most sustainable colleges for 12 years in a row. UCI is located in Orange County, 4 miles from the Pacific Ocean and 45 miles south of Los Angeles.

Completed applications containing a cover letter, curriculum vita, inclusive excellence activities statement, teaching statement, research statement, and contact information of three recommendation letter writers should be uploaded electronically. Recommendation letters will be requested for applicants who progress to the next stage of the search. Please refer to the following web site for instructions <https://recruit.ap.uci.edu/JPF09349>. The review of applications will begin December 1, 2024, and full consideration will be given to all applications received by this date.

**QUALIFICATIONS-** Basic qualifications (required at time of application)

Applicants should hold a Ph.D. degree (or expected by Spring/Summer 2025) in statistics, biostatistics or a related field. Candidates with research interests in all areas of statistics will be considered

**APPLICATION REQUIREMENTS-** Document requirements

- Curriculum Vitae - Your most recently updated C.V.
- Cover Letter
- Statement of Research
- Teaching Statement - See our guidance for writing a reflective teaching statement.
- Inclusive Excellence Activities Statement - Statement addressing how past and/or potential contributions to inclusive excellence will advance UCI's Commitment to Inclusive Excellence. See our guidance for writing an inclusive excellence activities statement.
- Sexual Misconduct, Harassment and Discrimination Declaration Form - All applicants of academic positions at the University of California, Irvine must download, complete, sign, and upload the following form with their application: Sexual Misconduct, Harassment and Discrimination Declaration Form

**Reference requirements-** 3 required (contact information only)

**Apply link:** <https://recruit.ap.uci.edu/JPF09349>

[mathalliance@purdue.edu](mailto:mathalliance@purdue.edu) | [www.mathalliance.org](http://www.mathalliance.org)

*This ad has been abbreviated to fit the page. You can see the ad in its entirety on our website.*

## Member Institution

## POSITION AT UNIVERSITY OF CALIFORNIA, SANTA CRUZ

### Position overview

**Position title:** Visiting Assistant Professor in Mathematics

**Salary range:** Commensurate with qualifications and experience. A reasonable estimate for this position is \$68,500 - \$90,100 per academic year (nine-month basis).

**Percent time:** Full-time (100%)

**Anticipated start:** July 1, 2025, with academic year beginning September 2025. Degree requirements must be completed by August 31, 2025.

**Position duration:** Initial appointment will be for two years. Reappointment for a third year is expected, but contingent upon availability of funding and an assessment of performance after the second year.

### Application Window

**Open date:** December 4, 2024

**Next review date:** Friday, Feb 14, 2025 at 11:59pm (Pacific Time). Apply by this date to ensure full consideration by the committee.

**Final date:** Monday, Sep 1, 2025 at 11:59pm (Pacific Time). Applications will continue to be accepted until this date, but those received after the review date will only be considered if the position has not yet been filled.

### Position Description

The <https://www.math.ucsc.edu/index.html> at the University of California, Santa Cruz (UCSC) invites applications for one or more visiting assistant professors in all areas of mathematics, including algebra, number theory, topology, analysis, and geometry and dynamics. Under the direction of the Mathematics Department Chair, the visiting assistant professor(s) will contribute to undergraduate and graduate instruction and the research activity of the department. Research, teaching, and service expectations are typical for early-career faculty at a research university. Furthermore, the selected candidate(s) will be expected to participate in department seminars.

Preference will be given to candidates whose field of research complements the department's <https://www.math.ucsc.edu/research/index.html>. Visiting assistant professors will be matched with a mentor from our permanent faculty for career and research guidance.

Experience teaching mathematics at the college or university level **as the instructor of record** will be highly valued. Applicants with expertise in the broad area of geometry/topology are strongly encouraged to apply.

Visiting assistant professors are eligible for <https://ucnet.universityofcalifornia.edu/compensation-and-benefits/eligibility/index.html> through the University of California.

### Qualifications/Basic qualifications (required at the time the application is submitted)

- PhD (or equivalent foreign degree) in mathematics or closely related field. It is expected the degree will be completed by August 31, 2025.
- A minimum of one year (three quarters or two semesters) of college-level teaching experience in mathematics.
- Evidence of research accomplishments (e.g., publications; grants; fellowships; giving conference talks; invited seminar talks; organizing workshops; and participation in research conferences, workshops, and summer schools), which can be obtained before or after the award of the doctorate degree.

### Application Requirements/Document requirements

Please be aware that the search committee will conduct a preliminary screening of the applications, which will be based only on the (1) cover letter and (2) the research statement.

• **Cover Letter (Preliminary Screening Document)** - One page letter of application that briefly summarizes your qualifications and interest in the position. Include a list of possible mentors from the department faculty. See

<https://www.math.ucsc.edu/research/algebra.html> and see faculty with research interest in <https://www.math.ucsc.edu/research/analysis.html>.

• **Statement of Research (Preliminary Screening Document)** - Statement (maximum of six pages) that describes your most important achievements, your goals and vision for research, and the experience and qualifications that make you well-suited to achieve them.

• **Curriculum Vitae** - Your most recently updated C.V., which should include a list of published papers, submitted manuscripts, and posted preprints; proposals submitted and awarded; classes taught; students supervised/mentored; invited talks; awards; and any other relevant signs of preparation and recognition.

• **Statement of Teaching** - Statement (maximum of two pages) that describes your formal teaching contributions (this can include classroom experience and other relevant supervision/mentorship/instruction), future teaching and mentoring goals, and a description of your teaching approach and practices. Please see our [https://drive.google.com/file/d/1dCvXUWXA\\_sJwC\\_EBu2dZvR0wX-dGwGJS/view?usp=sharing](https://drive.google.com/file/d/1dCvXUWXA_sJwC_EBu2dZvR0wX-dGwGJS/view?usp=sharing).

• **Statement of Contributions to Diversity, Equity, and Inclusion** - Statement (maximum of two pages) addressing your understanding of the barriers facing historically underrepresented groups in the United States and your past and/or future contributions to diversity, equity, and inclusion through teaching and professional or public service commensurate with training and experience. Candidates are urged to review <https://apo.ucsc.edu/diversity.html> before preparing their application. Please see our <https://drive.google.com/file/d/1ONkV8QM5p5WdRXeF24Vnjg-xwQhMehAo/view?usp=sharing>.

• **AMS Standard Cover Sheet** - The AMS cover sheet is available on [Mathjobs.org](https://mathjobs.org). Please see <https://www.ams.org/mathjobs/mathjobs-link-portfolio> as well as a [https://drive.google.com/file/d/1KyNujan14LDepsDQ\\_avklumWSVa3t-0o/view?usp=sharing](https://drive.google.com/file/d/1KyNujan14LDepsDQ_avklumWSVa3t-0o/view?usp=sharing).

### Reference requirements

• 3-6 letters of reference required. At least one letter must address the applicant's teaching experience and ability and two letters must address the applicant's research. Applications must include confidential letters of recommendation\*. Note that your references, or dossier service, will submit their confidential letters directly to the UC Recruit System. \*All letters will be treated as confidential per University of California policy and California state law. For any reference letter provided via a third party (i.e., dossier service, career center), direct the author to UCSC's confidentiality statement at <http://apo.ucsc.edu/confstm.htm>.

**Apply link:** <https://apptkr.com/5865155> Help contact: [kabaldwi@ucsc.edu](mailto:kabaldwi@ucsc.edu)

Under Federal law, the University of California may employ only individuals who are legally able to work in the United States as established by providing documents as specified in the Immigration Reform and Control Act of 1986. Certain UCSC positions funded by federal contracts or sub-contracts require the selected candidate to pass an <https://www.uscis.gov/e-verify>. The university sponsors employment-based visas for nonresidents who are offered academic appointments at UC Santa Cruz, as outlined in campus policy <https://academicpersonnel.ucsc.edu/campus-academic-personnel-manual/capm-102-530-sponsorship-of-immigration-and-work-authorization/>.

UCSC is a smoke & tobacco-free campus. If you need accommodation due to a disability, please contact Disability Management Services at [roberts@ucsc.edu](mailto:roberts@ucsc.edu) (831) 459-4602. As a University employee, you will be required to comply with all applicable University policies and/or collective bargaining agreements, as may be amended from time to time. Federal, state, or local government directives may impose additional requirements.

[mathalliance@purdue.edu](mailto:mathalliance@purdue.edu) | [www.mathalliance.org](http://www.mathalliance.org)

*This ad has been abbreviated to fit the page. You can see the ad in its entirety on our website.*



## POSITION AT GRINNELL COLLEGE

### GRINNELL COLLEGE – Department of Statistics – One-Year Term Position (Start Fall 2025).

GRINNELL COLLEGE. The Department of Statistics invites applications for a one-year term contract with the possibility of renewal appointment beginning Fall 2025. Assistant Professor (Ph.D. or terminal degree equivalent program) preferred; Instructor (ABD, or MS in Statistics) or Associate Professor possible. In this position, you will have the opportunity to work with five other statistics faculty as we continue to develop our curriculum in statistics and data science. Grinnell College also provides generous support for faculty research. The teaching load is five courses [OR EQUIVALENT] over two semesters and may include courses at all levels of our undergraduate statistics and data science curriculum. Candidates with experience involving data-driven courses, data science, or undergraduate research projects will receive strong consideration. Additional information about our curriculum and faculty can be found at <https://www.grinnell.edu/academics/majors-concentrations/statistics>. Term contract renewals are subject to departmental and college priorities and budget availability.

Grinnell College is a highly selective undergraduate liberal arts college with a strong tradition of social responsibility. In letters of application, candidates should discuss their potential to contribute to a college community that maintains a diversity of people and perspectives as one of its core values. To be assured of full consideration, all application materials should be received by **February 15, 2025**. Please visit our application website at <https://jobs.grinnell.edu> to find more details about the job and submit applications online. Candidates will need to upload a letter of application, curriculum vitae, transcripts (copies are acceptable), a teaching statement that addresses teaching statistics to students from a diverse range of backgrounds and academic interests, and provide email addresses for three references. Questions about this search should be directed to the search chair, Professor Jeff Jonkman, at [StatisticsSearch@grinnell.edu](mailto:StatisticsSearch@grinnell.edu) or 641-269-3169.

Grinnell College is committed to establishing and maintaining a safe and nondiscriminatory educational environment for all College community members. It is committed to a policy of nondiscrimination in matters of admission, employment, and housing, and in access to and participation in its education programs, services, and activities. The college does not discriminate on the basis of race, color, ethnicity, national origin, age, sex, gender, sexual orientation, gender identity or expression, marital status, veteran status, pregnancy, childbirth, religion, disability, creed, or any other protected class.

An offer for this position will be contingent on successful completion of a background check.